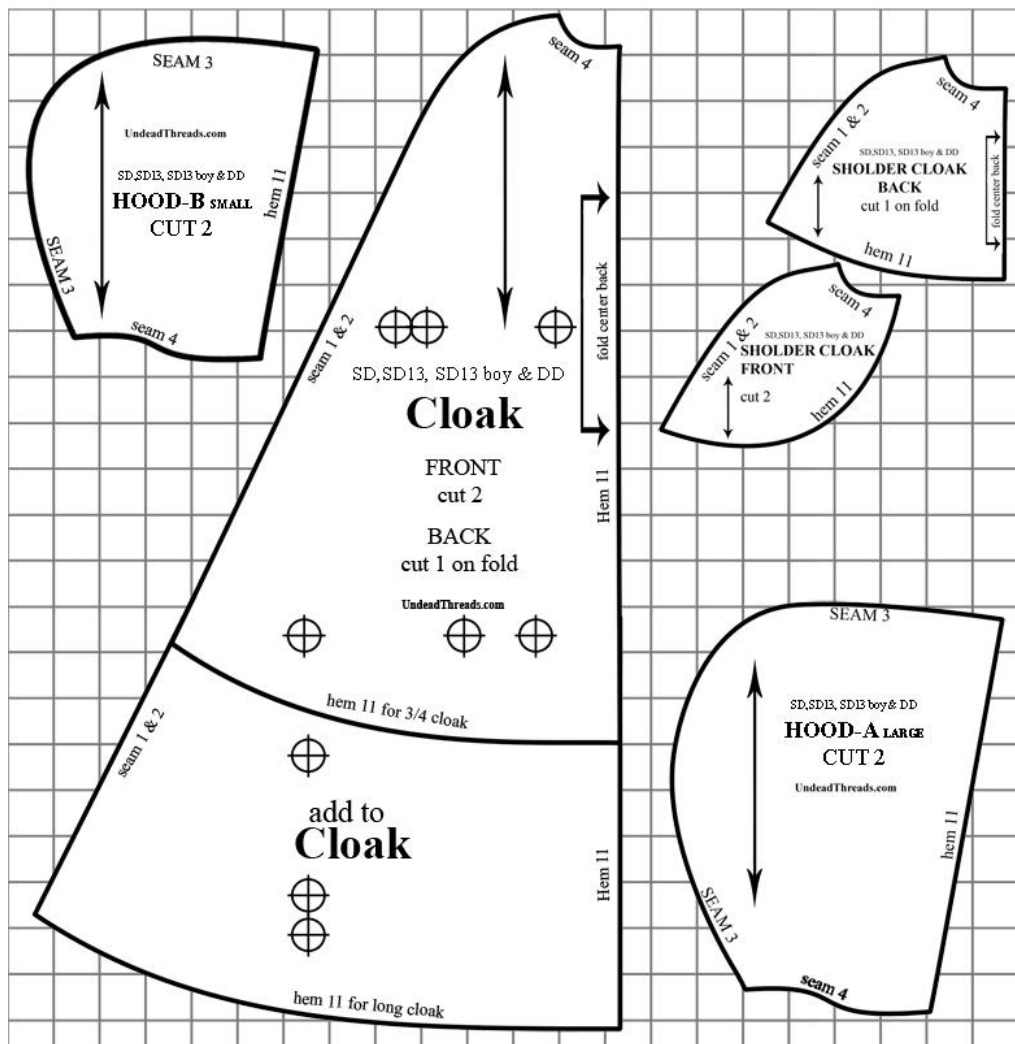


CLOAK

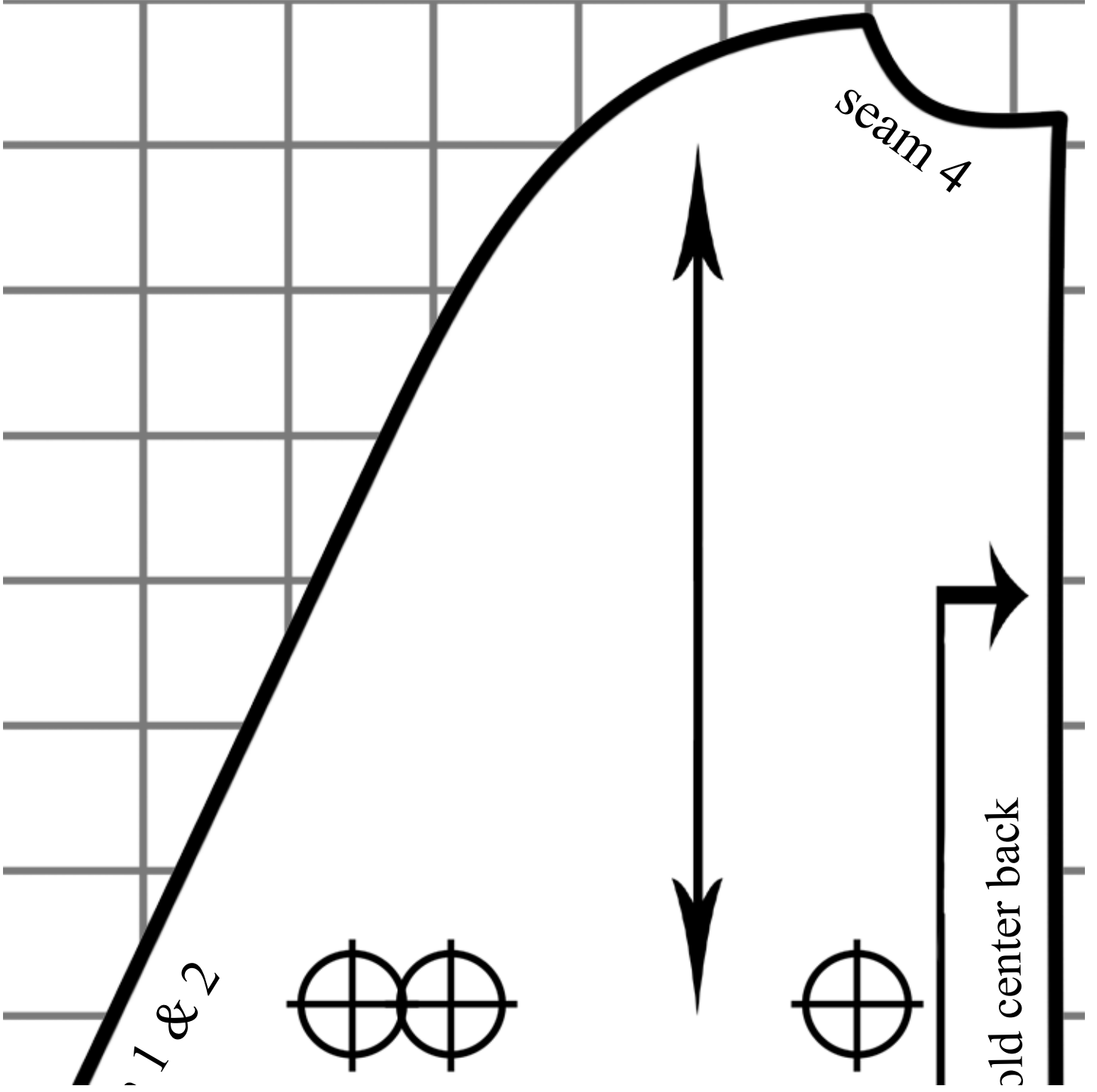
Fits SD, SDD , SD13

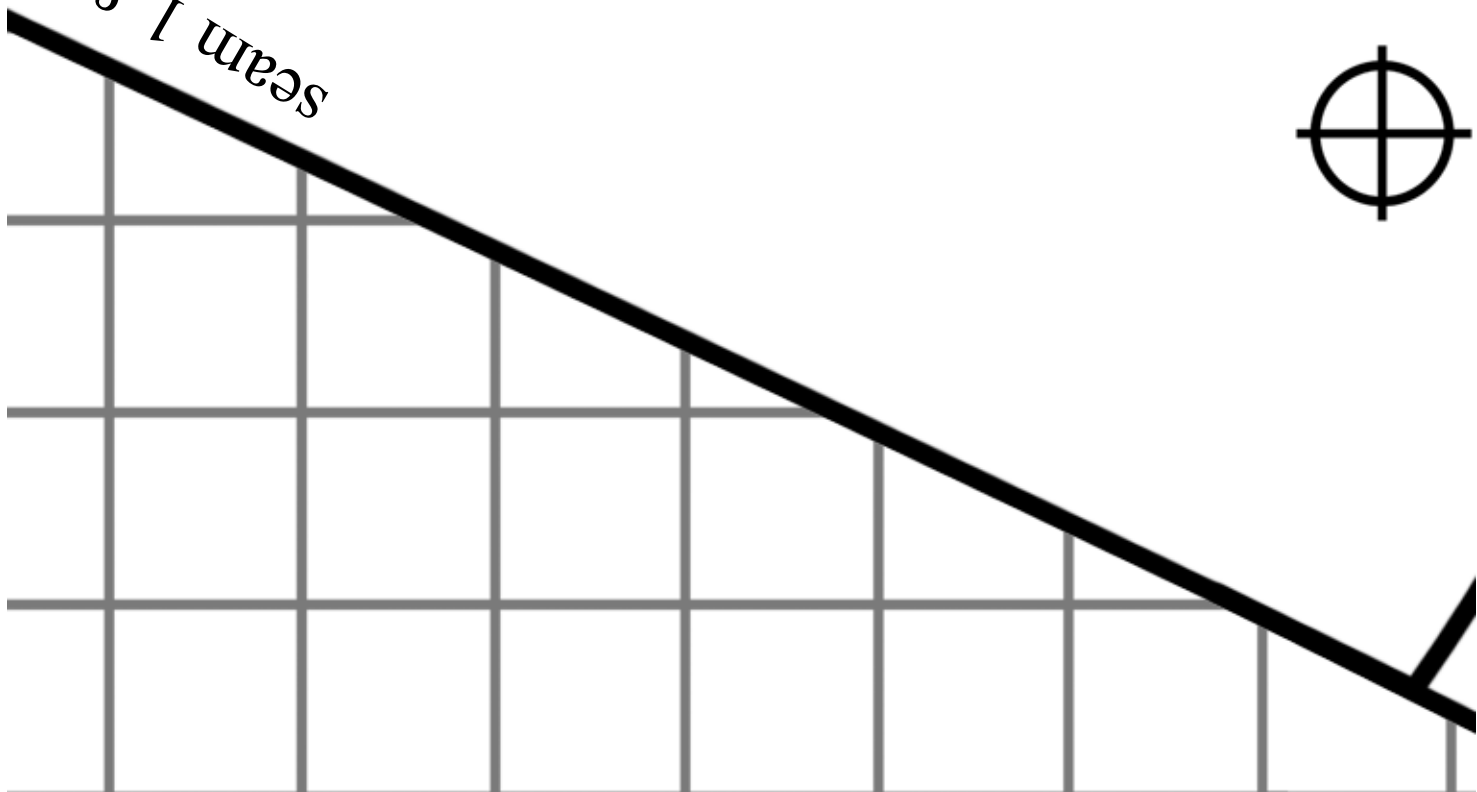
Visit www.UndeadThreads.org for directions. And more free *Super Dollfie size patterns.

Print pages 2-8 for pattern

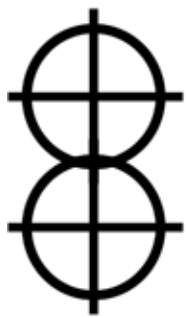


* Dollfie , SD and SD13 are a registered trademarks of VOLKS US and is used here as a size reference only.





seam 1 & 2



SD,SD13, SD13 boy & DD

Cloak

FRONT

cut 2

BACK

cut 1 on fold

UndeadThreads.com



fold cent

Hem 11





hem 11 for 3/4 cloak

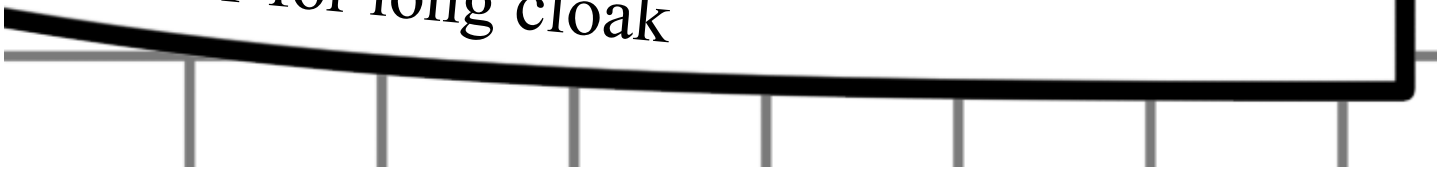


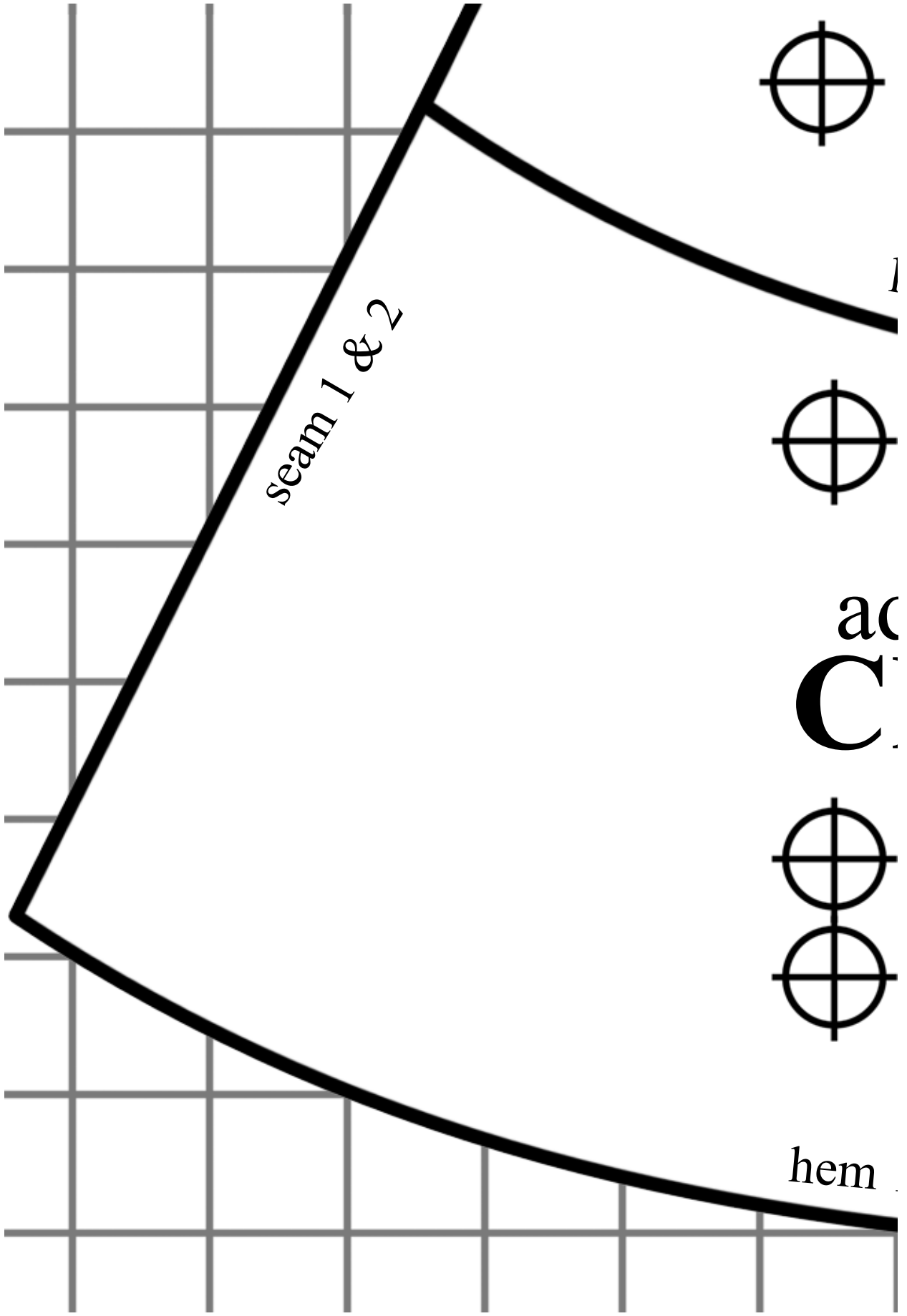
add to
Cloak

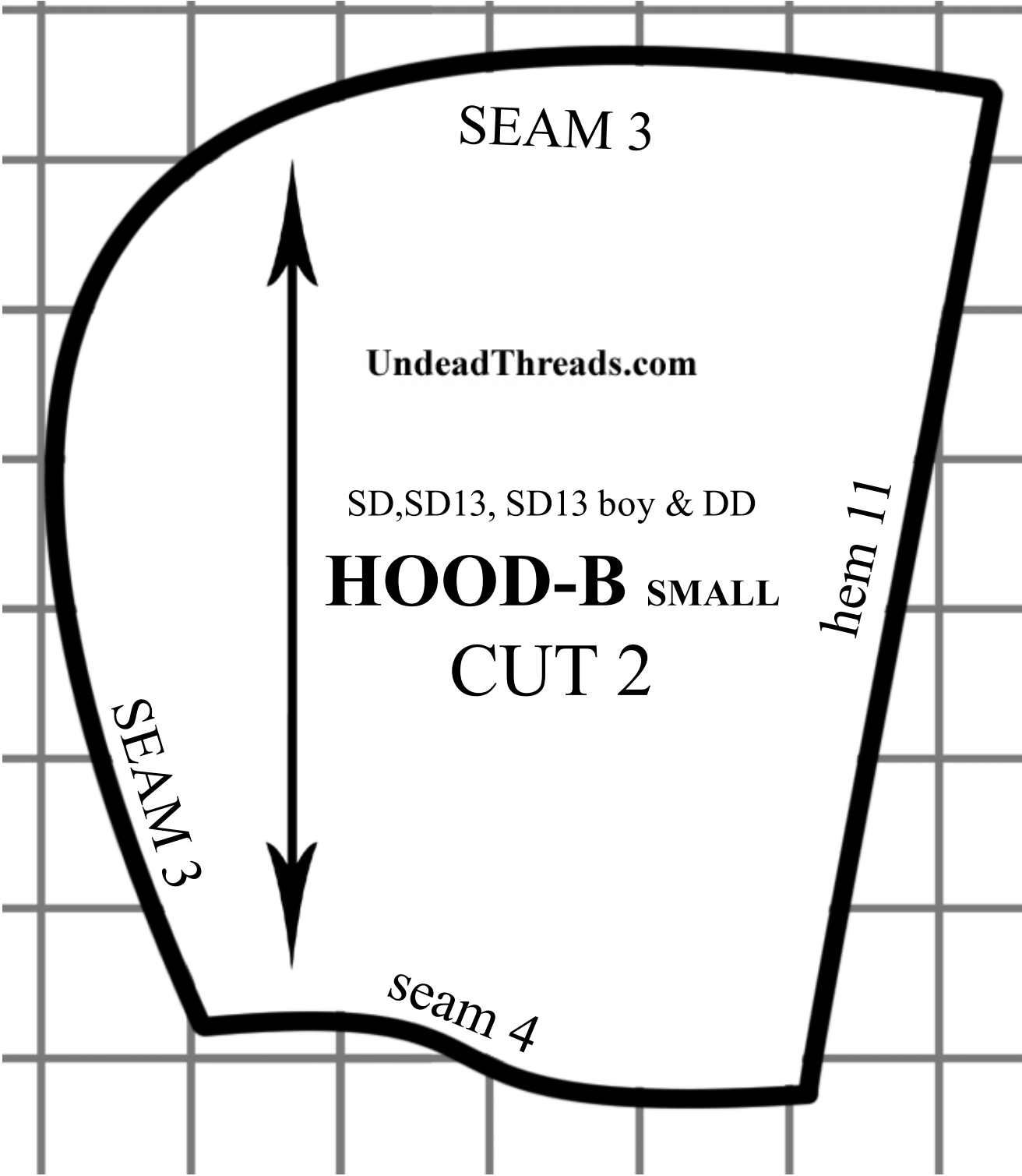


hem 11 for long cloak

Hem 11







SEAM 3

UndeadThreads.com

SD,SD13, SD13 boy & DD

HOOD-B SMALL

CUT 2

hem 11

SEAM 3

seam 4

SEAM 3

SD,SD13, SD13 boy & DD

HOOD-A LARGE

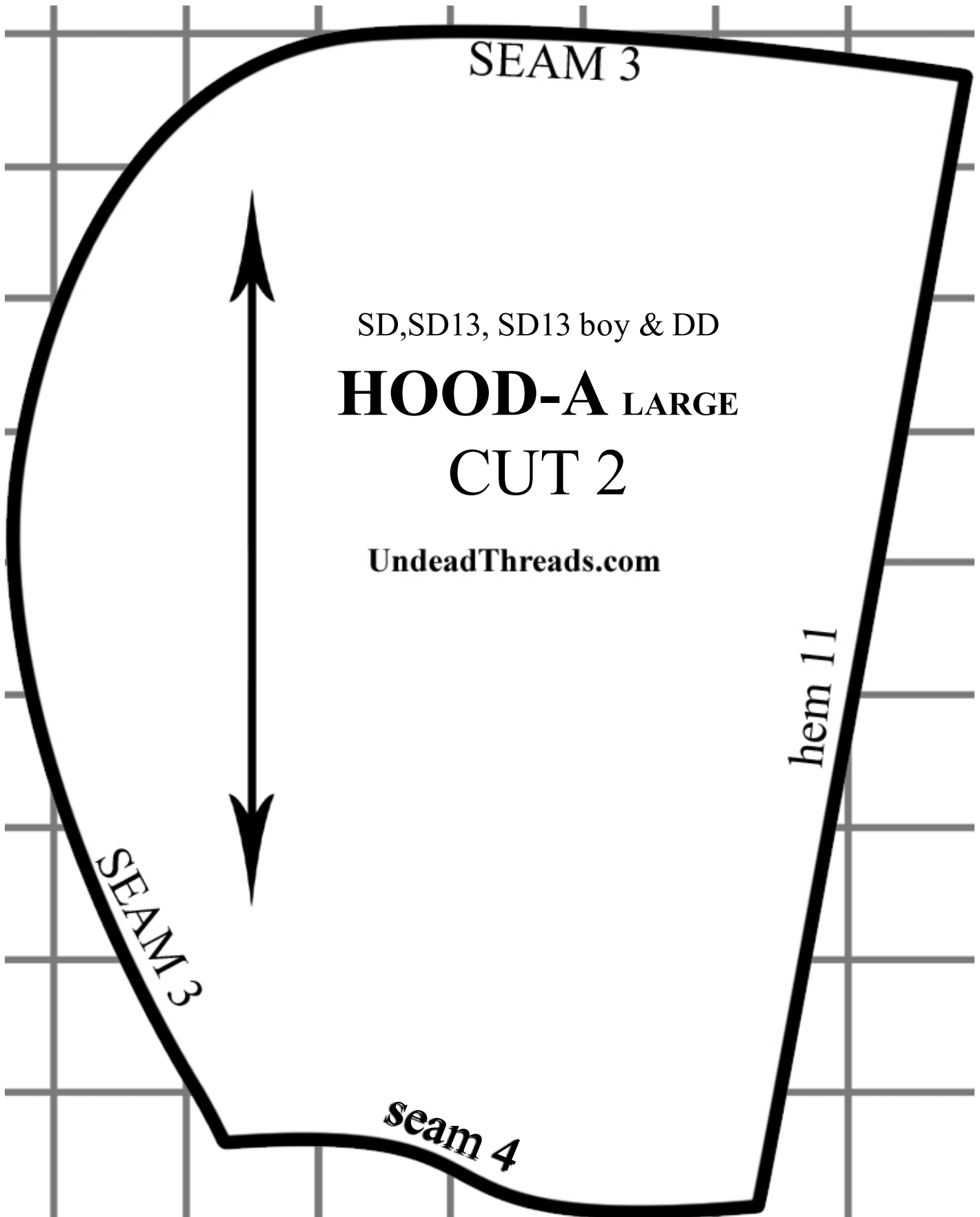
CUT 2

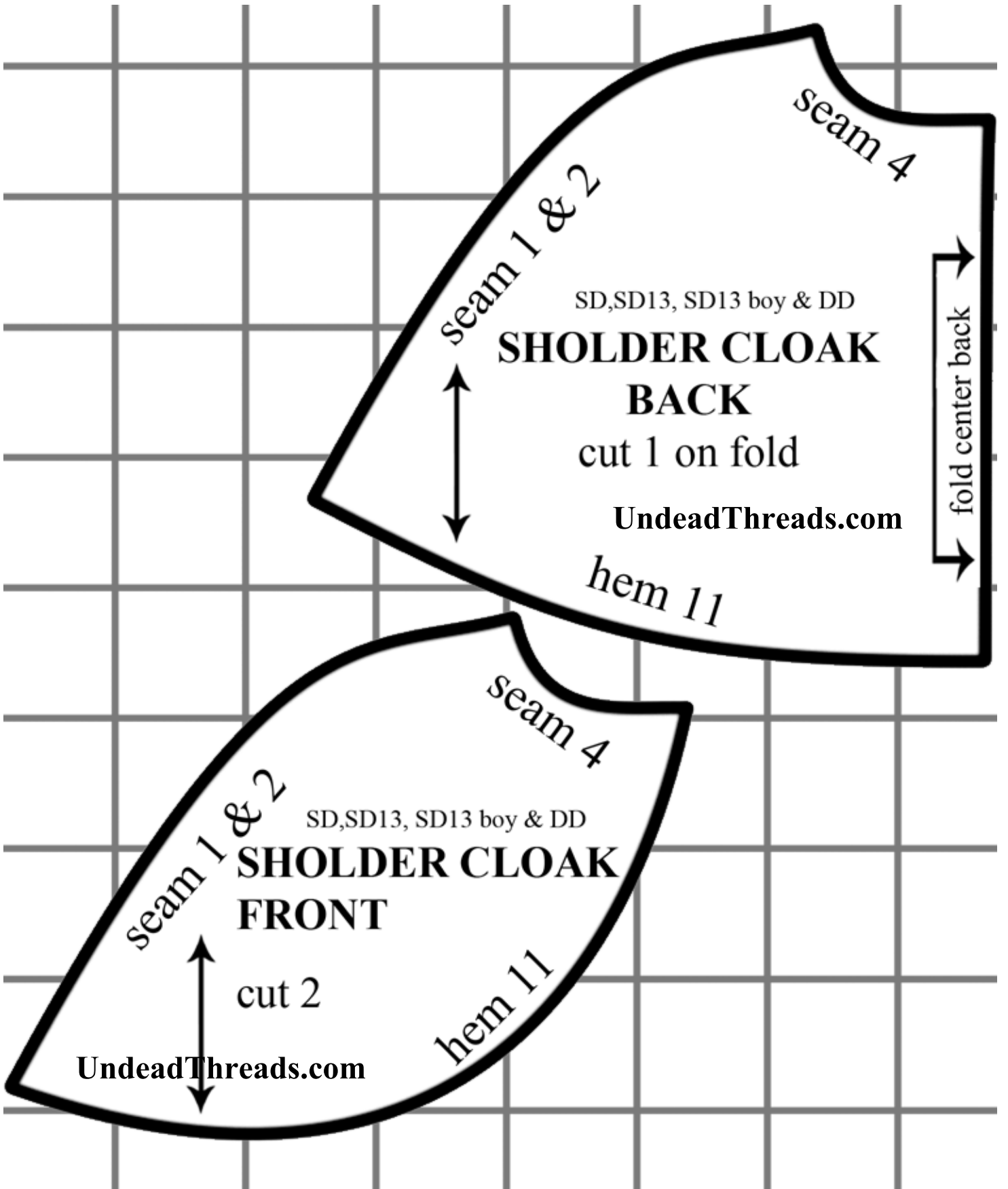
UndeadThreads.com

hem 11

SEAM 3

seam 4





SD,SD13, SD13 boy & DD
**SHOLDER CLOAK
BACK**

cut 1 on fold

UndeadThreads.com

fold center back

SD,SD13, SD13 boy & DD
**SHOLDER CLOAK
FRONT**

cut 2

UndeadThreads.com