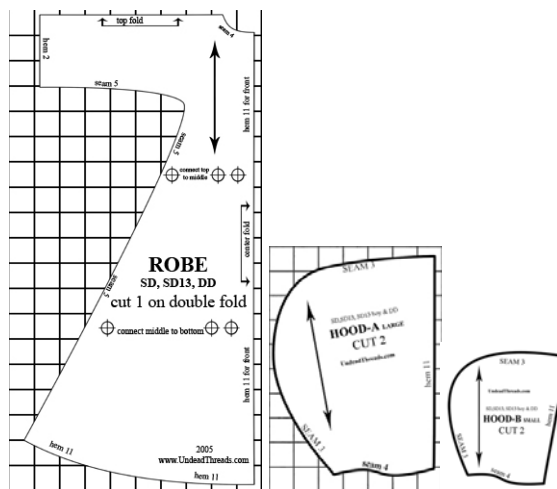


Robe

Fits *SDG , SDB, SD13G , SD13B

Visit www.UndeadThreads.org for directions. And more free *Super Dollfie size patterns.

Print pages 2-6 for pattern.



* Dollfie , super Dolfie , SD , SD13G are a registered trademarks of VOLKS US and are used as a size reference only.

⊕ connect top
to middle ⊕ ⊕

ROBE

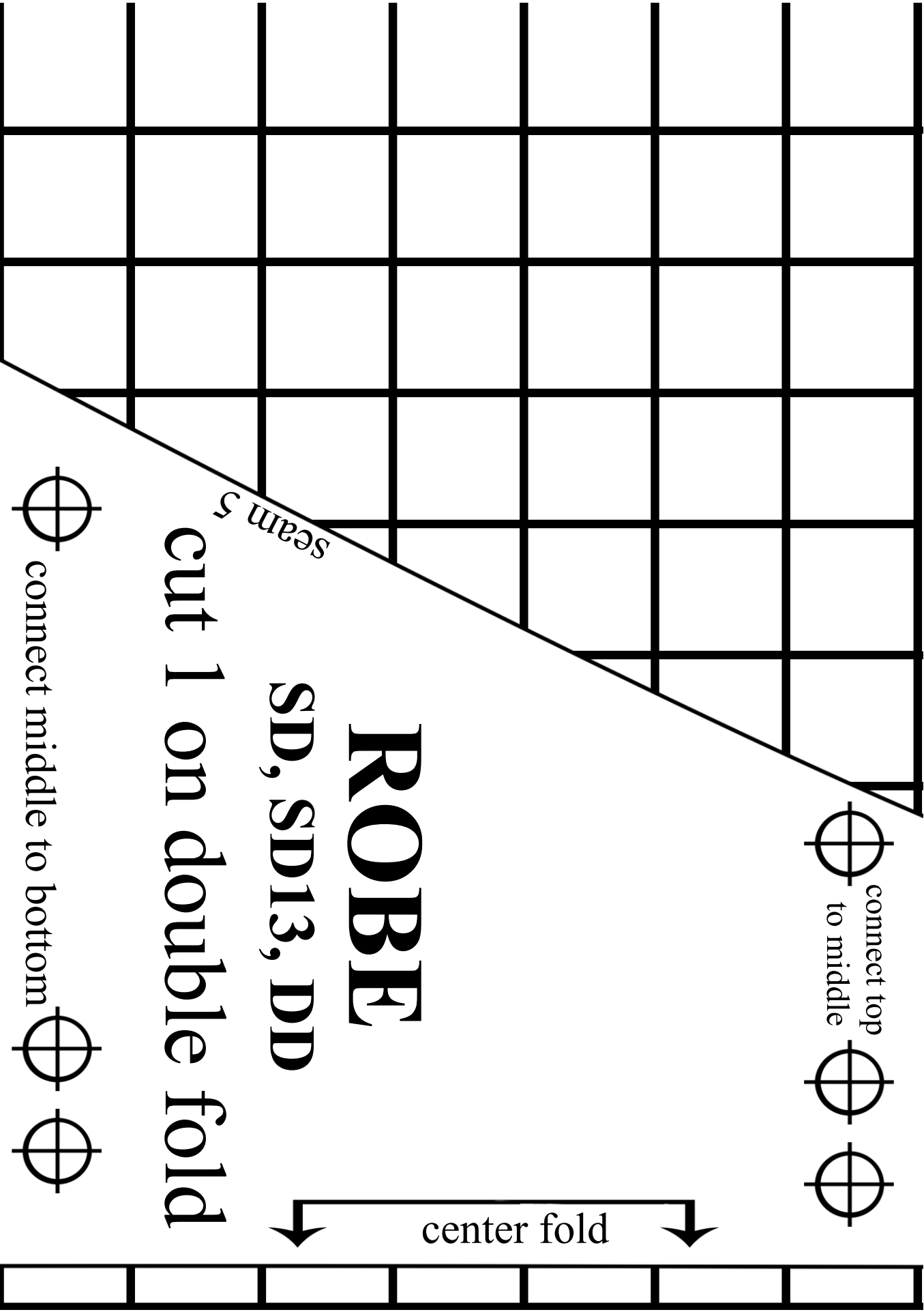
SD, SD13, DD

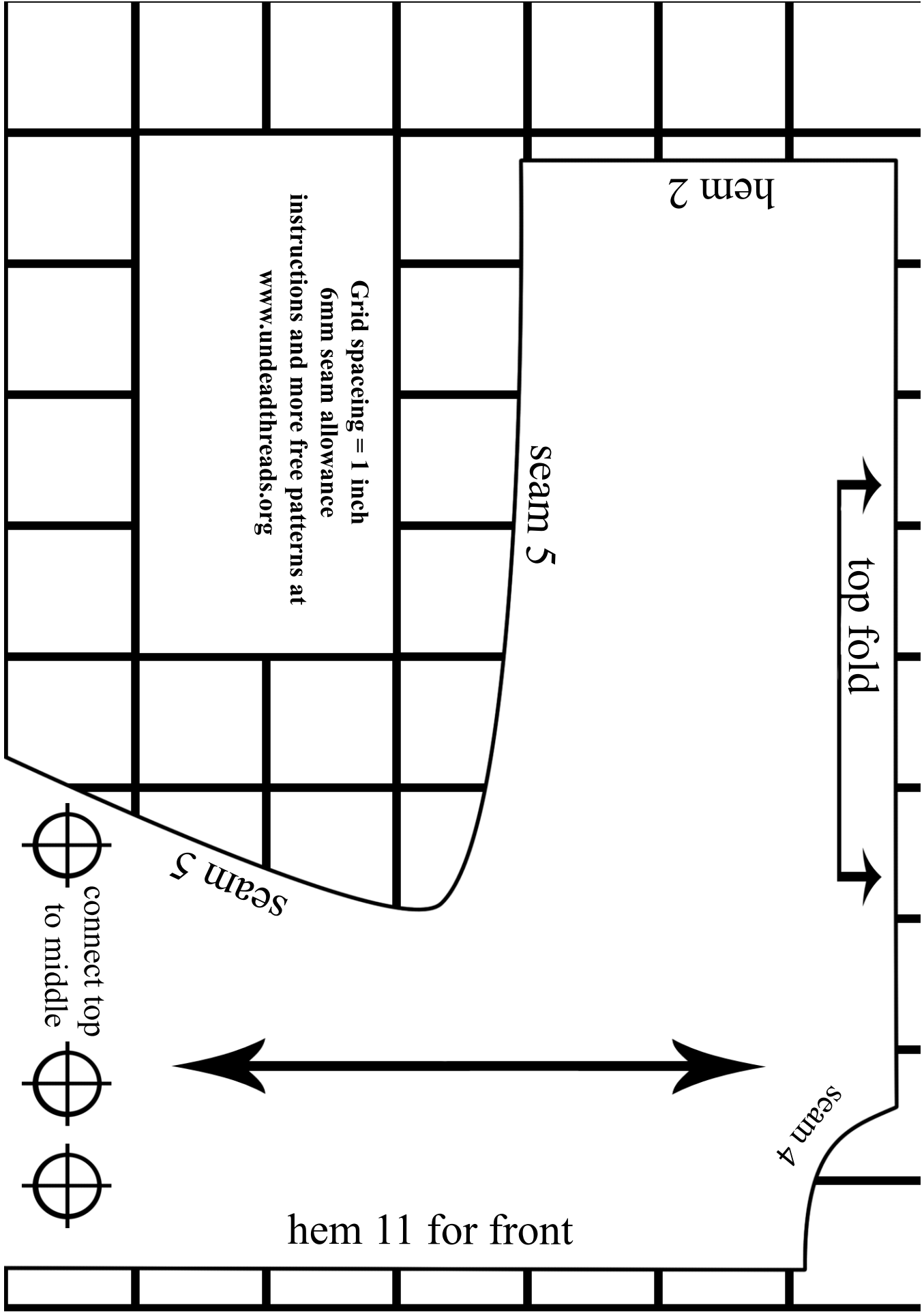
cut 1 on double fold

seam 5

center fold

⊕ connect middle to bottom ⊕ ⊕





hem 2

top fold

seam 5

Grid spacing = 1 inch
6mm seam allowance
instructions and more free patterns at
www.undeadthreads.org

seam 5

seam 4

hem 11 for front

connect top
to middle

SEAM 3

SD,SD13, SD13 boy & DD

HOOD-A LARGE

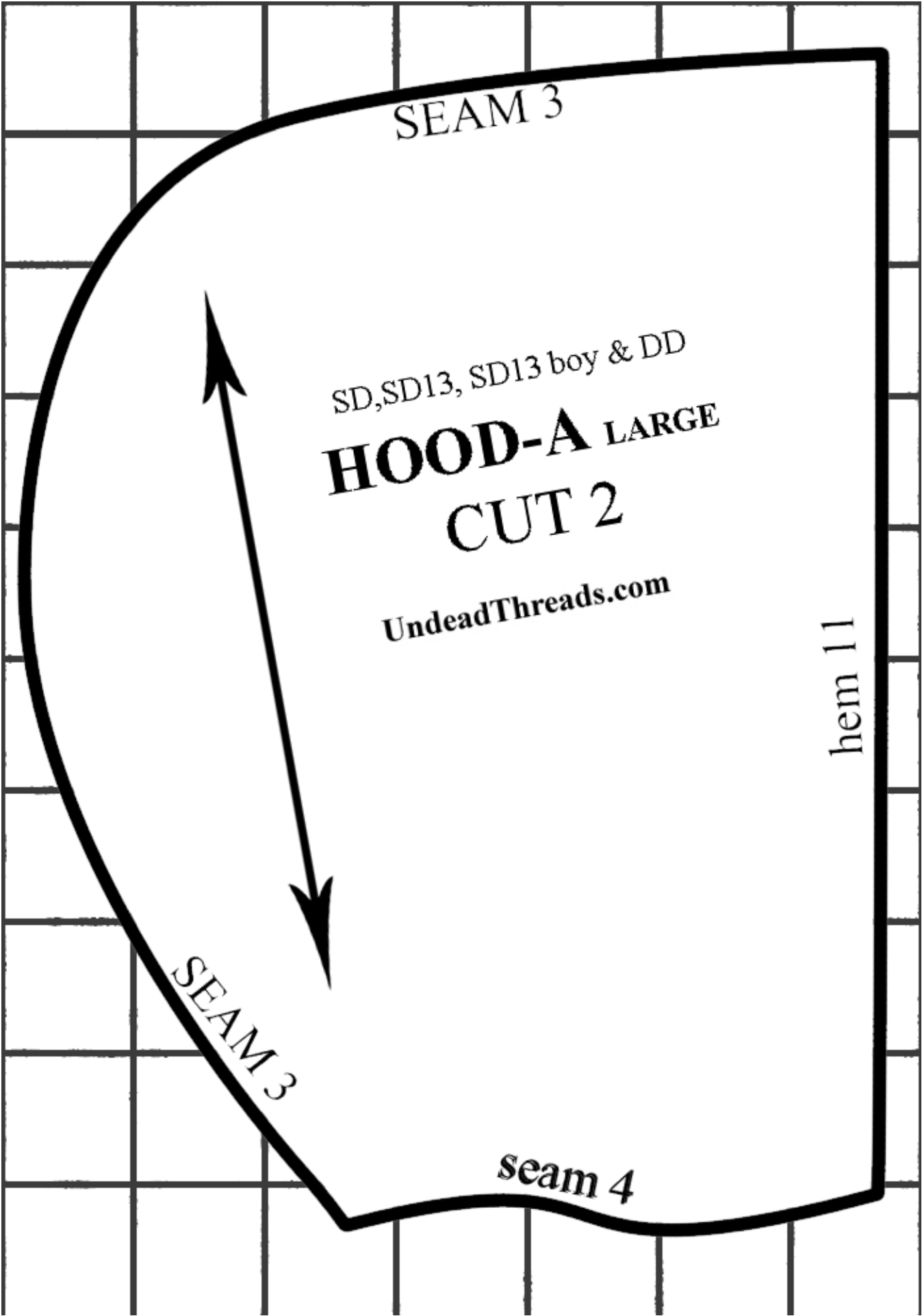
CUT 2

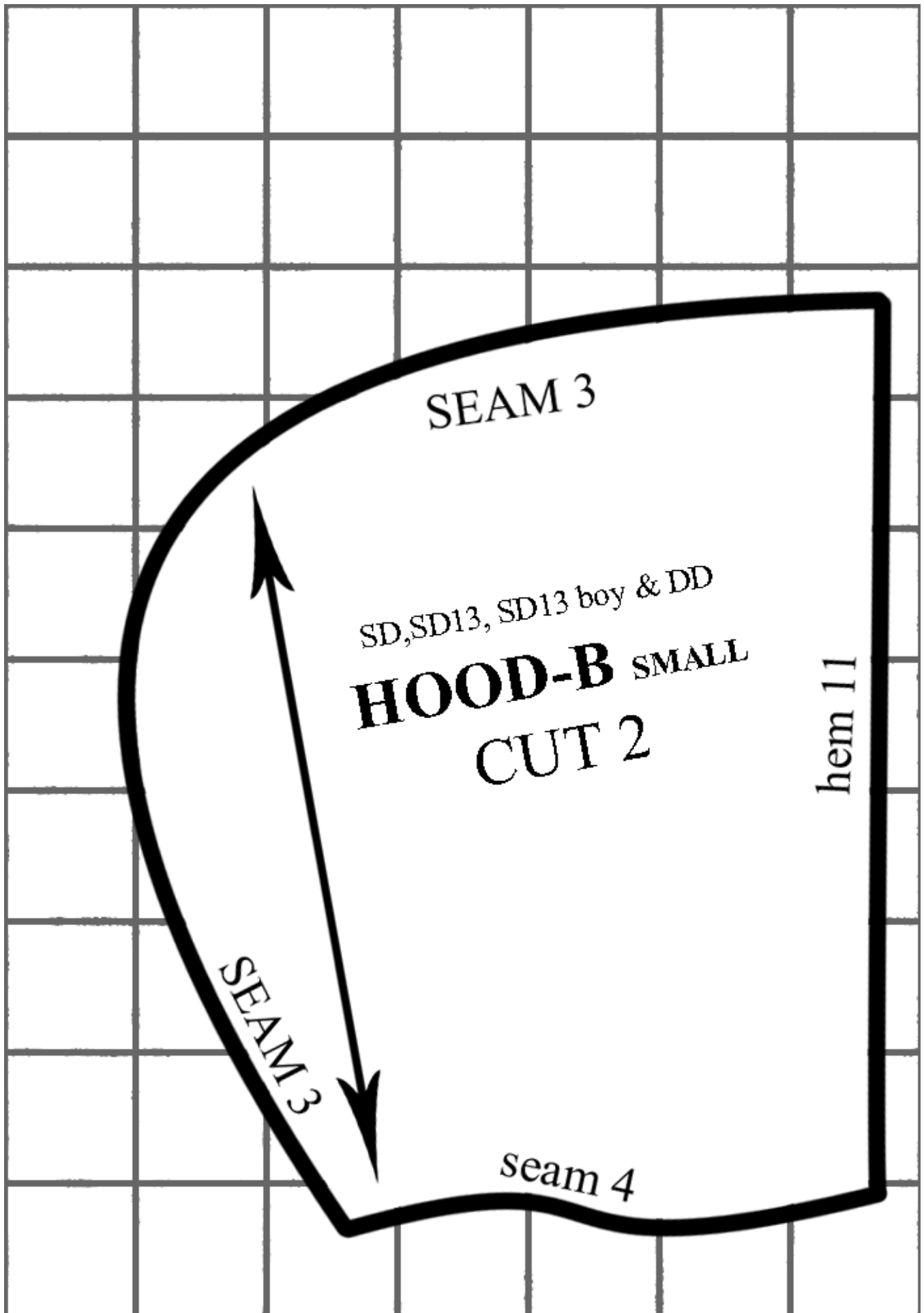
UndeadThreads.com

hem 11

SEAM 3

seam 4





SEAM 3

SD,SD13, SD13 boy & DD
HOOD-B SMALL
CUT 2

hem 11

SEAM 3

seam 4