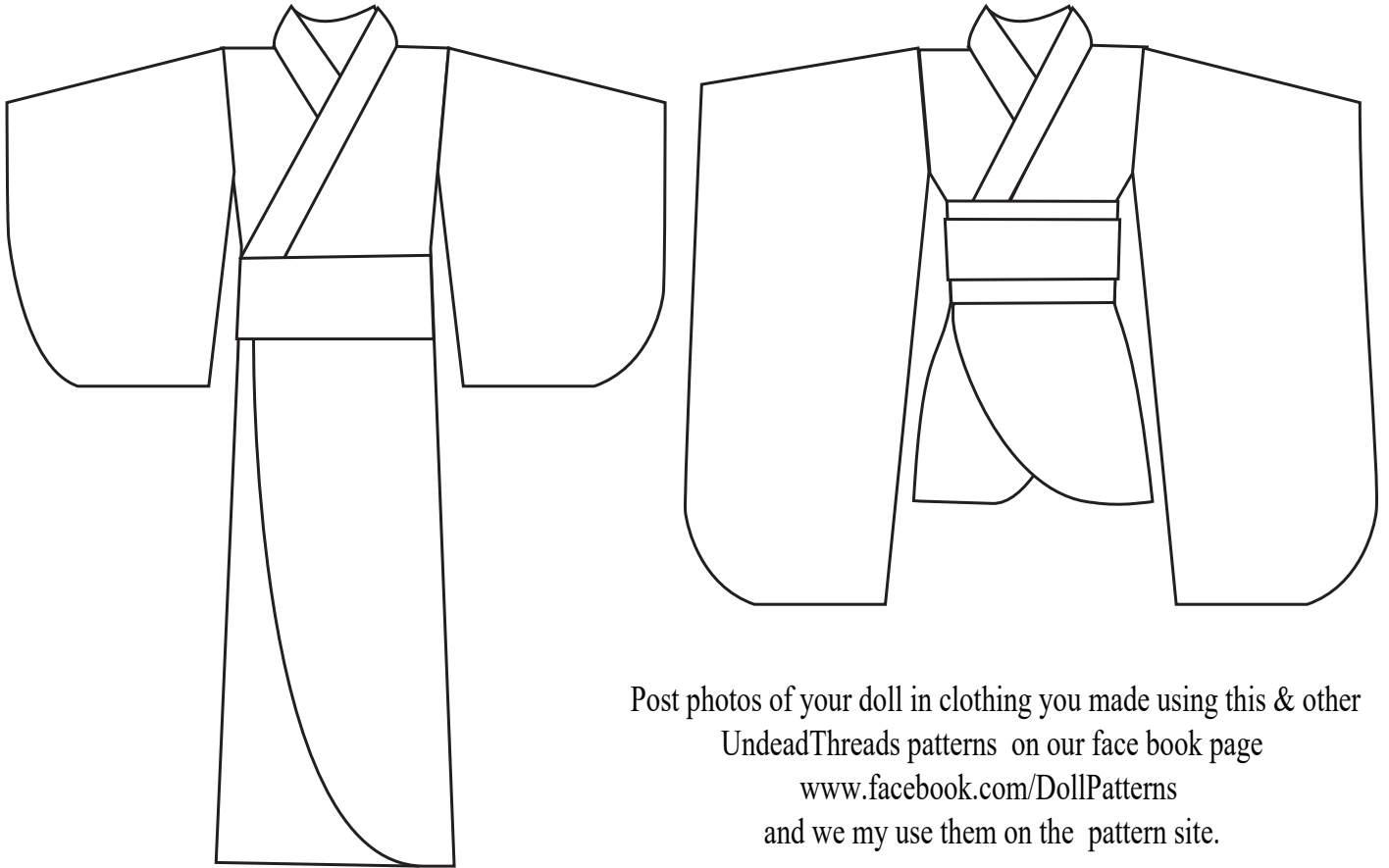


# Kimono

Fits 28 inch Monster High® dolls

Visit [UndeadThreads.com](http://UndeadThreads.com) for directions. And more free \*doll size patterns.



Post photos of your doll in clothing you made using this & other UndeadThreads patterns on our face book page [www.facebook.com/DollPatterns](http://www.facebook.com/DollPatterns) and we my use them on the pattern site.

Vier Madchen 2016 All rights reserved.

Unless otherwise indicated, all materials on these pages are copyrighted by VierMadchen and/or UndeadThreads.com

Monster High® is a trade mark of Mattel, Inc a worldwide leader in the design, and , manufacture of toys ,such as Barbie®, ever”®, Monster High® (of course),

NOTE: the 28 inch Monster High & ever after high dolls are made by Just Play not Mattel.

Seam 4

Seam 4

2

# MH28" kimono COLLAR

crease line

cut one on fold

fold

UndeadThreads.com



Seam 4

Seam 4



Join to Kimono front





Join to Kimono front



Seam 4

Seam 5

# KIMONO

## Fits MH 28 inch

### FRONT

2017 UndeadThreads.com  
All rights reserved.

Hem 6

Hem 11 for GI or short Kimono



Join to Kimono front





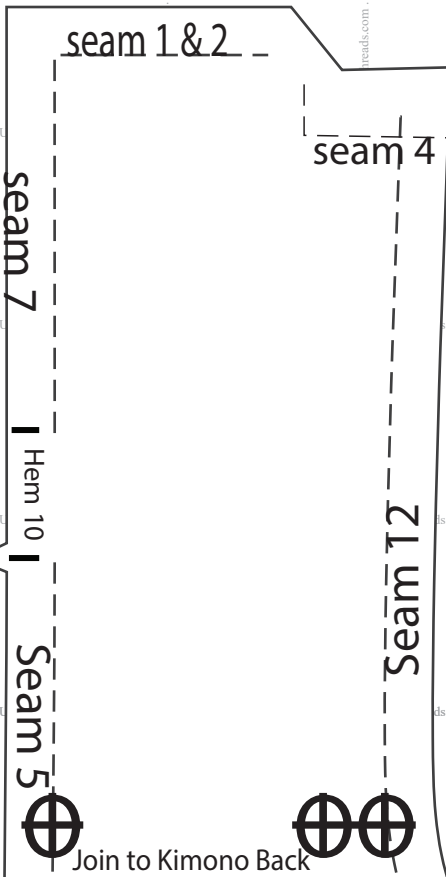
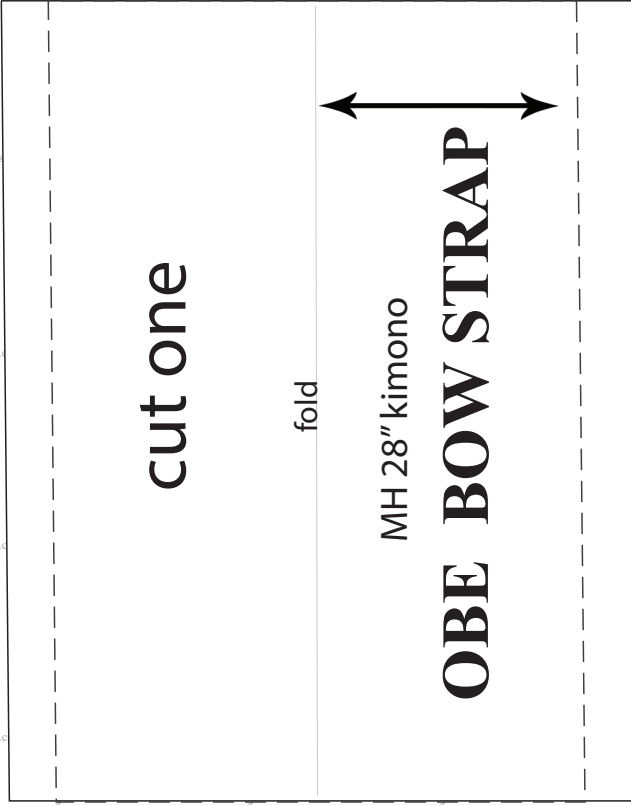
Join to Kimono front

Seam 5



Hem 6

Hem 11





Join to Kimono Back



# BACK

## cut 1 on fold

MH 28" kimono

2017 UndeadThreads.com

All rights reserved.

Seam 12

Hem 11 for GI or short Kimono

Seam 5

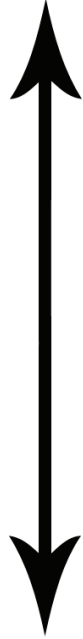


Join to Kimono Back





# Join to Kimono Back



hem 11

cut one for OBE PAD  
And one for OBE BOW

FITS MH 28" kimono

# OBE PAD & OBE BOW

UndeadThreads.com

Seam 10

Seam 10

crease line

Seam 10

Seam 10



Fold



seam 7

hem 2

Kimono MH 28"

# SLEEVE

cut 2 on fold



2017 UndeadThreads.com  
All rights reserved.

seam 8

lengthen or shorten

Hem 1

2016 UndeadThreads.com  
All rights reserved.

seam 8

